

- 1
- 2
- 3
- 4
- 5
- 6
- 7
- 8
- 9
- 10
- 11
- 12
- 13
- 14
- 15
- 16
- 17
- 18
-

TYPES

- Type **A**: without sealing washers
- Type **B**: with sealing washers

Main specifications

- AISI CF-8 stainless steel
- Sandblasted matte finish
- Sleeve bearing
- Plastic (PTFE)
- Carriage bolt DIN 603
- Stainless steel
- Cap nuts DIN 917 / Washers
- Stainless steel
- Seals
- Sealing washers
- Plastic (Polyacetal POM)
- Spacer ring
- Silicon, 40 ... 60 Shore A

FEATURES AND APPLICATIONS

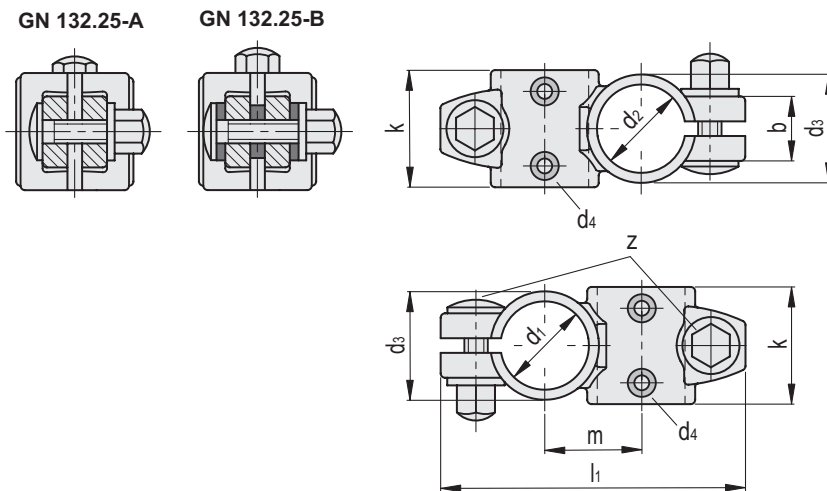
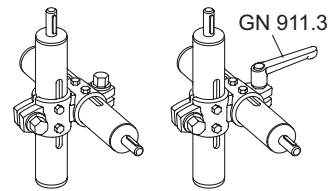
Two-way linear actuator connectors GN 132.25 are based on two-way connector clamps. The additionally provided mounting holes are used to connect to the drive key of a linear actuator. Bores with the designation **G** are equipped with sleeve bearings.

With the screw locations **z**, the play of the guide bores d1 / d2 can be adjusted or the linear actuator connectors can be clamped after adjustment. Type B is equipped with seals at the screw locations.

For quick clamping without tools, the cap nuts can be replaced by the adjustable hand levers GN 911.3 (see page).

ACCESSORY

Adjustable Hand Levers GN 911.3 (see page).



Conversion Table	
1 mm = 0.039 inch	
d1 - d2	
mm	inch
30	1.17
50	1.95

GN 132.25-A

Code	Description	d1 - d2 with sleeve bearing	d3	d4	b	k	l1	m	z	z Clamping kit	⚖
GN.42891	GN 132.25-G30-G30-A-4	G 30 - G 30	37	M 4	22	40	104	33	M 8	GN 911.3-63 / GN 911.3-78	296
GN.42895	GN 132.25-G50-G50-A-4	G 50 - G 50	60	M 6	30	65	150	53	M 10	GN 911.3-78 / GN 911.3-92	970

GN 132.25-B

Code	Description	d1 - d2 with sleeve bearing	d3	d4	b	k	l1	m	z	z Clamping kit	⚖
GN.42893	GN 132.25-G30-G30-B-4	G 30 - G 30	37	M 4	22	40	104	33	M 8	GN 911.3-63 / GN 911.3-78	296
GN.42897	GN 132.25-G50-G50-B-4	G 50 - G 50	60	M 6	30	65	150	53	M 10	GN 911.3-78 / GN 911.3-92	970

Tube connectors